

Working together for clean air



Tacoma-Pierce County Nonattainment Area Summary of Public Input



The Tacoma-Pierce County Clean Air Task Force is an advisory committee made up of community leaders, citizen representatives, agency staff and others with a strong interest in improving our air quality and protecting public health. The Task Force met from May 2011 through January 2012 to explore solutions to our region's wintertime air pollution problem. The group's final recommendations were delivered to the Puget Sound Clean Air Agency in December 2011.

In October, the group solicited public input on the draft pollution-reduction strategies under consideration. Input was invited through an online survey, during two public open houses, by phone and through U.S. Mail. Postcards inviting input were mailed to all affected households, advertisements were run in print and online newspapers, and approximately 4000 posters and flyers were distributed across the community. The results of the more than 600 responses are summarized here.

Please note that the strategies reflected here are in their original draft condition and differ somewhat from the Clean Air Task Force's final recommendations. These draft strategies were modified based on the public input received.

More information about the public input process, the full text of all input and the final Task Force recommendations are available at www.cleanairpiercounty.org.

Draft Strategy #1: Enhanced Enforcement of Burn Bans

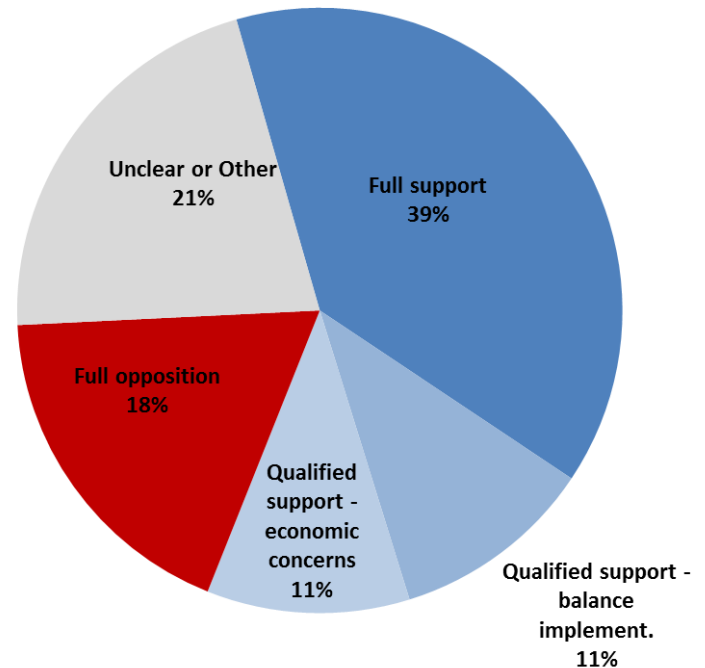
Goal

Reduce the amount of pollution when air quality conditions are poor.

How

- Expanding communications and outreach for burn bans, so that more people know when they are happening
- Exploring technologies that would enable better nighttime enforcement
- Developing a permit or registration system for those whose wood stoves are their only adequate source of heat to allow for exemptions to burn during burn bans

Enhanced Enforcement



Draft Strategy #2: “Time of Sale” Removal of Uncertified Wood Stoves and Inserts

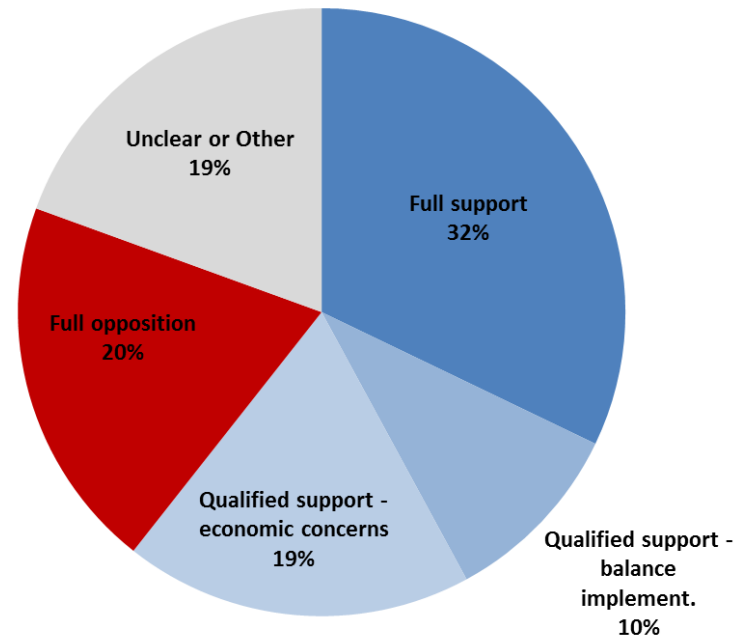
Goal

Reduce the number of older, more polluting wood-burning devices

How

- Require removal of uncertified wood stoves and inserts when a house is sold.
- Incentives could be available for all home owners to assist with removing the device and subsidies for certain home owners.
- May also include a system of home inspections for compliance.

Time of Sale Removal



Draft Strategy #3: “Date Certain” Removal of Uncertified Wood Stoves and Inserts

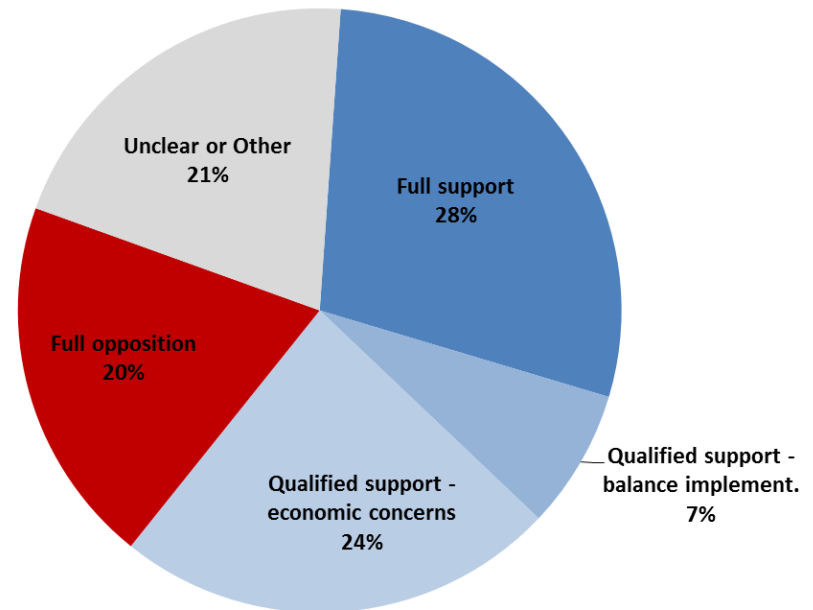
Goal

Reduce the number of older, more polluting wood-burning devices

How

- Require removal of uncertified wood stoves and inserts by a certain date in the future.
- Incentives could be available to help with replacement as well as improved weatherization.

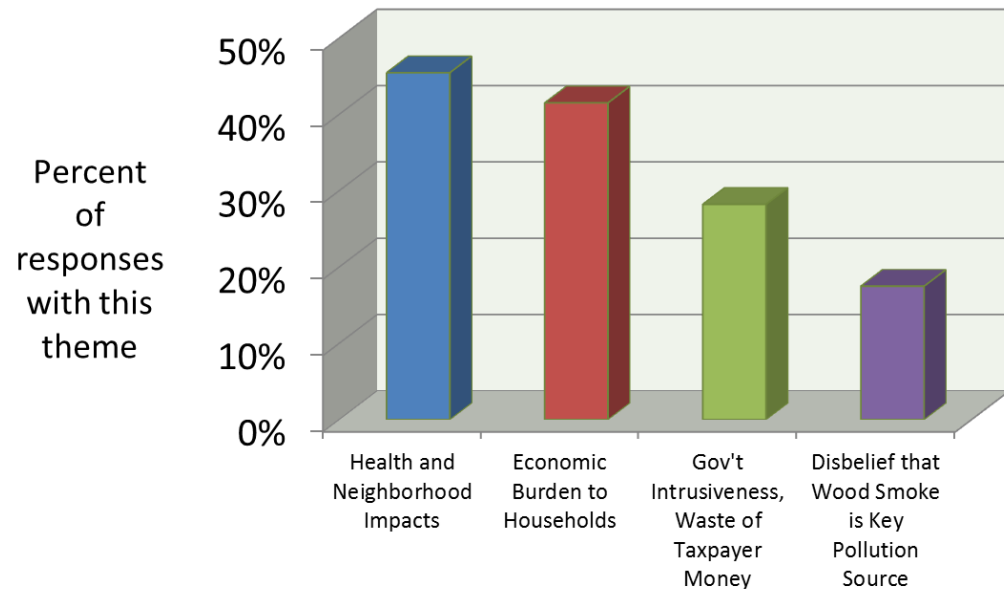
Date Certain Removal



Four key themes emerged across the public input from all sources:

- Concern about impacts of pollution from wood burning and wood smoke on human health and neighborhoods
- Concern about the economic impacts of the Task Force's recommendations (particularly to fixed- and low-income households)
- Perception that efforts to reduce air pollution are too intrusive or a waste of taxpayer money
- Disbelief that wood smoke is a significant source of pollution in Tacoma and Pierce County

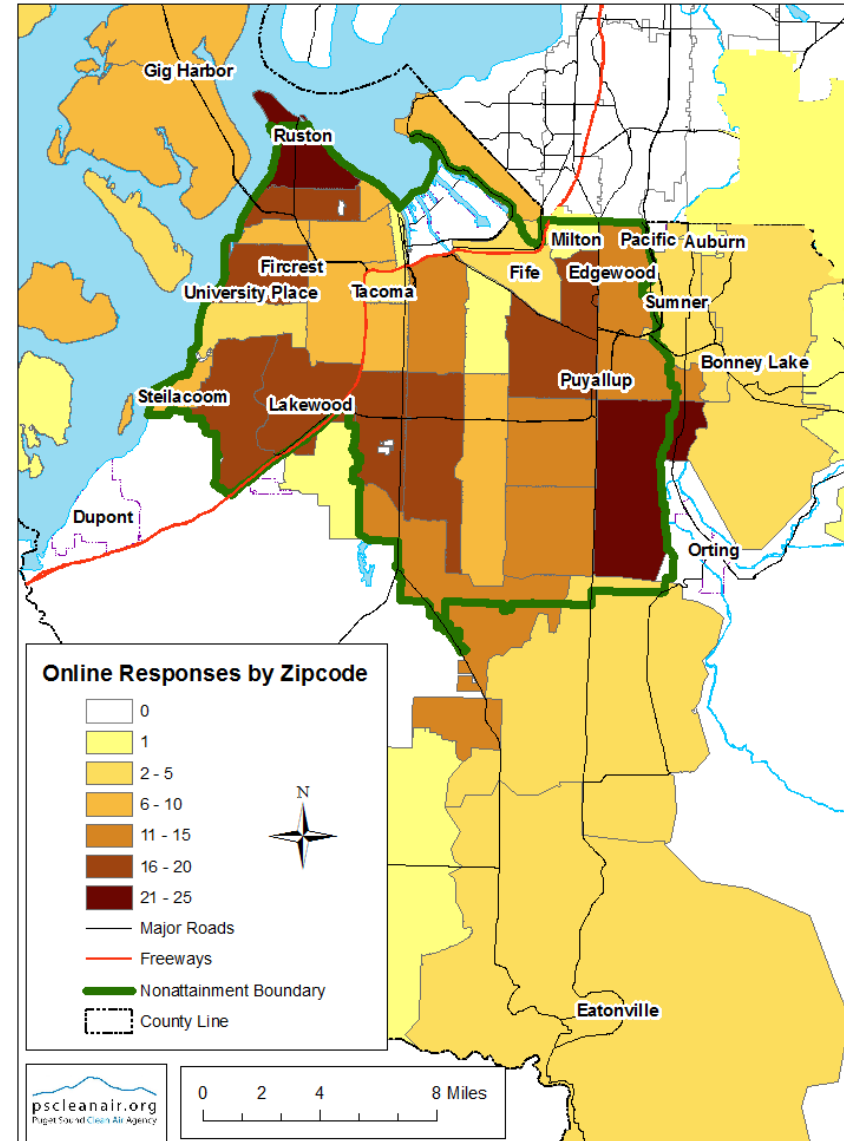
Public Input General Themes



Total Online Responses by Zip Code

More than 400 people provided feedback on the draft strategies via an online survey. Responses to the call for public input were received from every ZIP code within the Tacoma-Pierce County nonattainment area.

Darker colors on the map at right indicate higher numbers of survey respondents per ZIP code.



Total Public Meeting Attendees by Zip Code

Approximately 200 people attended two public open houses held during October 2011 in the nonattainment area. Open houses were hosted in Tacoma on October 20th and in Puyallup on October 24th. The majority of people attending the meetings used wood burning as a source of heat in their homes. Members of the public attended from nearly every ZIP code within the Tacoma-Pierce County nonattainment area.

Darker colors on the map at right indicate higher numbers of open house attendees per ZIP code.

